

Lidl - Sint-Niklaas

Project Details

Activities

Buildings
Industrial & logistics

Contractors

Willemen Bouw

location

Europark Zuid 6E
9100 Sint-Niklaas Belgium
Oost-Vlaanderen BE

Client

Sint-Niklaas Logistics (Lidl)

Architects

Architeam

Engineering Office

LingK

Surface area above ground

9 679m²

Construction period

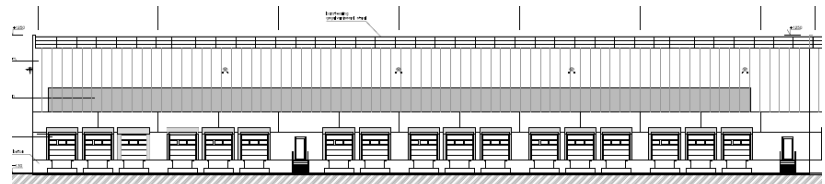
10 months

Start work

10-2016

End of work

08-2017



Extension of a turn key distribution center with including infrastructure for Lidl in Sint-Niklaas

The extension exist of :

- 9.679 m²
- 13.500 m² environment works
- 2.350 m² green areas.

Willemen Bouw



Boerenkrijgstraat 133
2800 Mechelen, Antwerpen
(Belgium)
tel +32 3 450 77 00
bouw@willemen.be
www.willemen.be

Willemen Bouw was established on 30 April 2025 through the merger of Willemen Construct, Cosimco, Franki Construct and Tools.